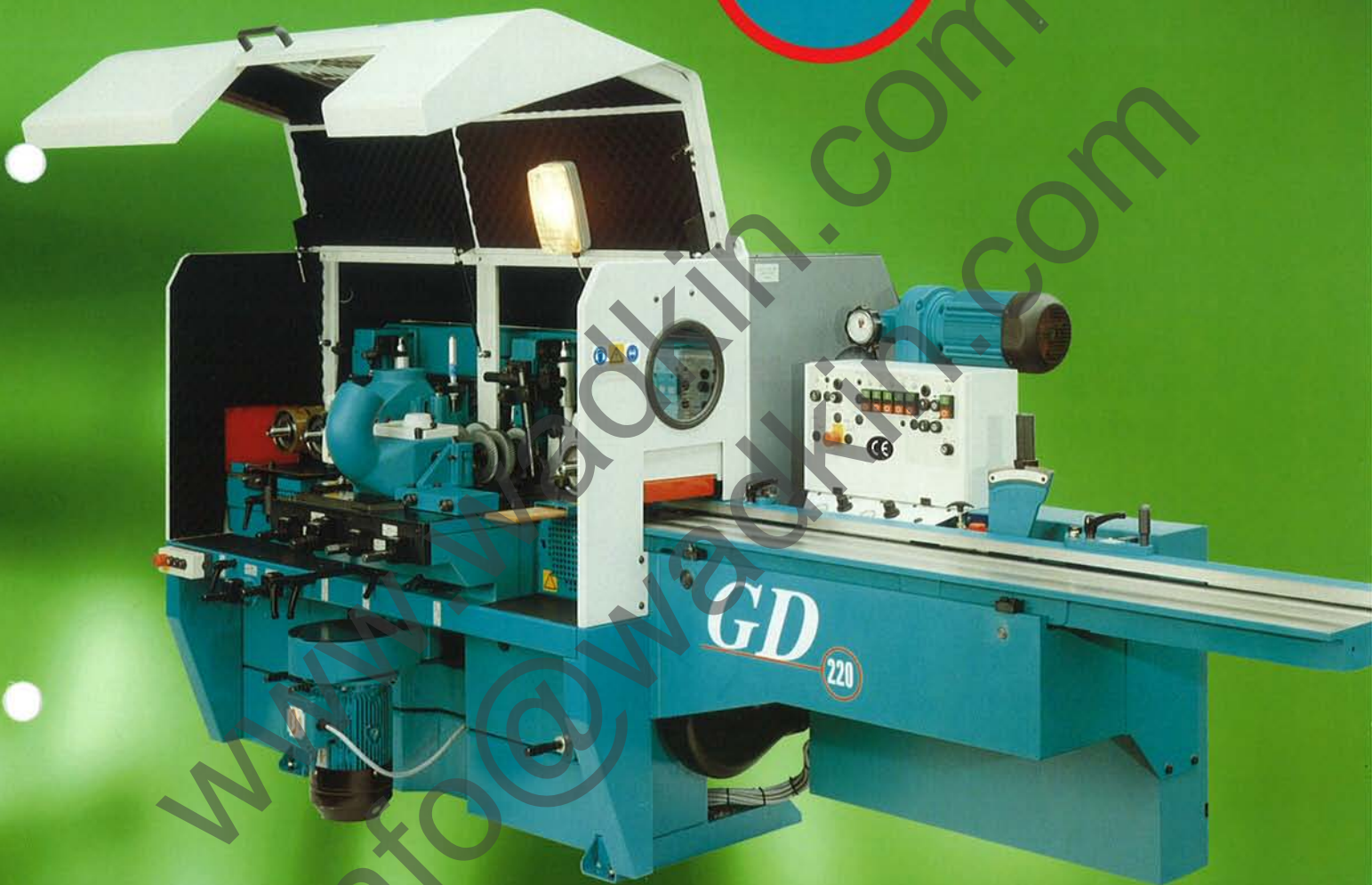


GD

RANGE



**THROUGHFEED
PLANERS
AND
PLANER
MOULDERS**

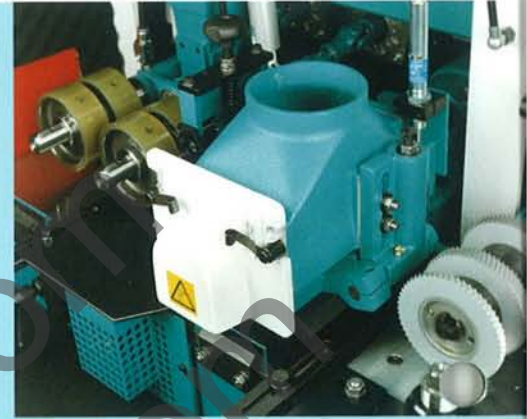


GD

RANGE PLANING, STRAIGHTENING

The GD range of general purpose planer moulders are available as four or five headed machines and in addition, can be fitted with a universal head for flexibility of output.

The GD is a heavy duty machine with a high specification as standard. Individual motors to all cutterheads give optimum power transmission.

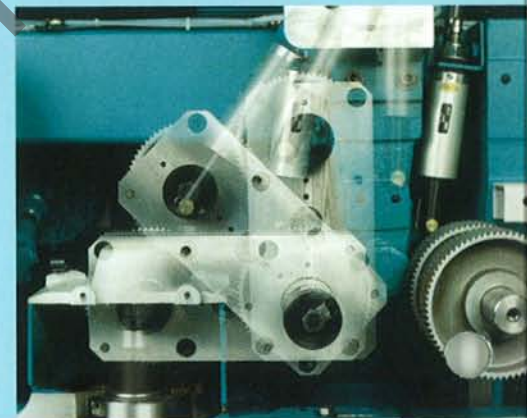
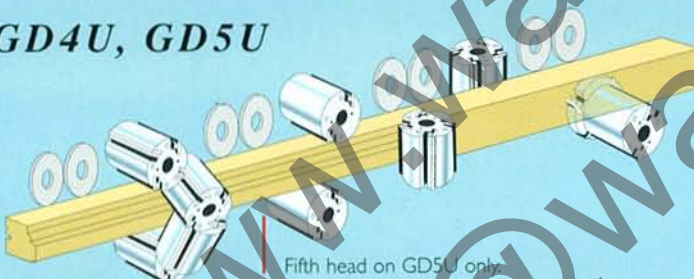


Optional radial chipbreaker to top head for the ultimate in control of thin stock or short pieces.

GD4, GD5



GD4U, GD5U



Optional intermediate top driven feed roller, to be used in conjunction with either a grooved bed or random side head when feeding short stock.



GD5 Planer Moulder.

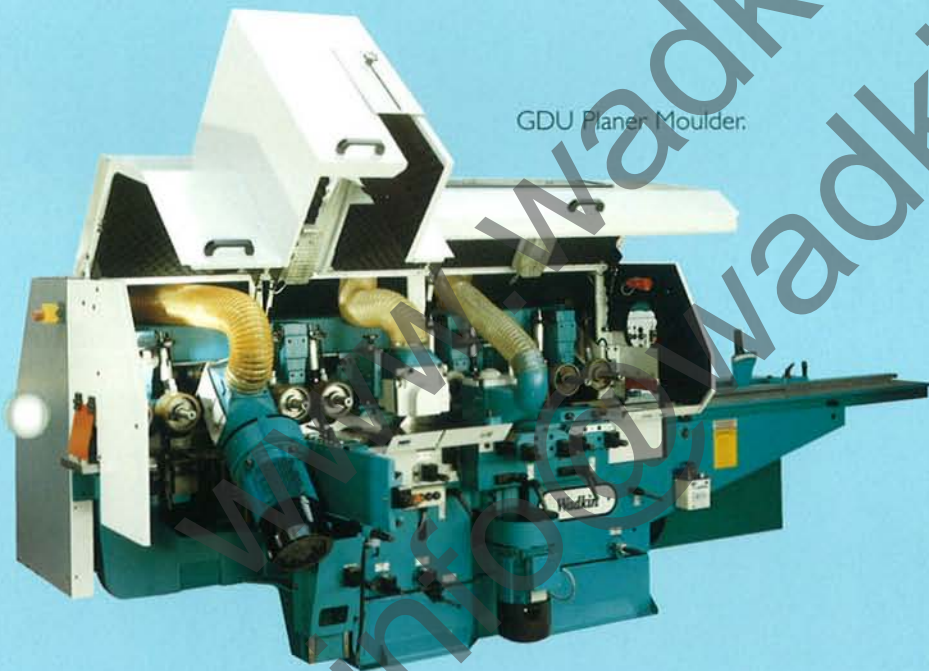
NING, THICKNESSING, MOULDING – ALL IN ONE PASS



The Wadkin edge referencing system ensures the components are free of imperfections with all edges perfectly straightened.

Two outfeed driven roller stations, independently adjustable, for ultimate timber control.

Individual gearbox and cardan drive to all feed roller stations for smooth maintenance-free drive.



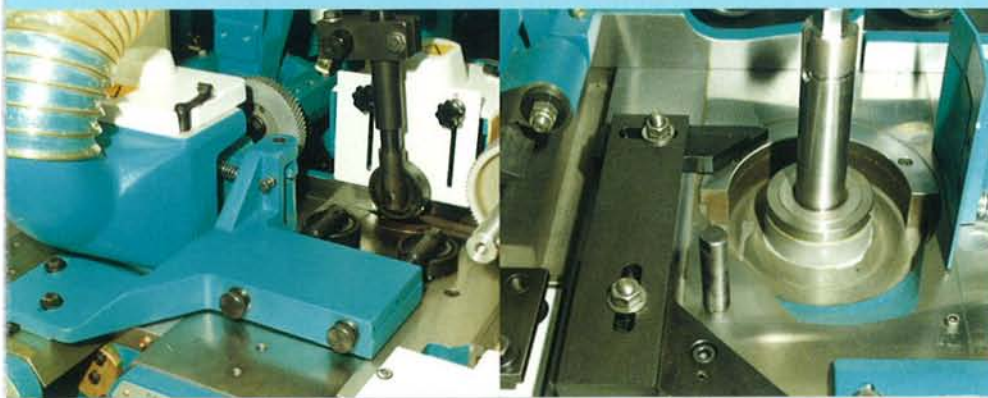
GDU Planer Moulder.

Optional double side roller pressure, opposite fence side head, moves with near side head.

Optional side pad pressure after near side head (positions with near side head horizontal adjustment).

OTHER OPTIONS

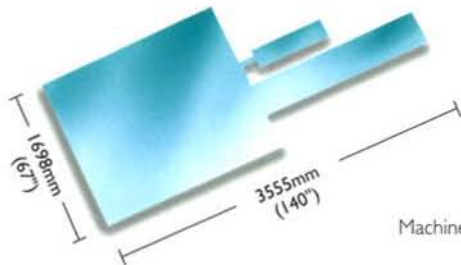
- Random side head for the running of varying widths.
- Extra wide capacity to finish at 250mm.
- Electronic positioning to top and near side heads with either touch control or full 99 positioning micro processor control.
- A second bottom head can be added to a GD4 or GD4U at a later date.
- Chromed bed for reduced wear when machining hard and abrasive timbers.
- Grooved bed for the machining of short or twisted components or work pieces without square ends.
- Optional air bed for the ultimate in feeding without the contamination associated with oil lubrication systems.



GD4, 5

With infeed straightening table.

Min. headroom requirement 1980mm (78").



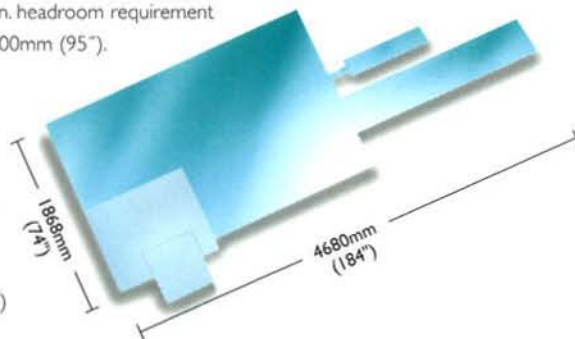
Machine bed height 875mm (34 1/2 inches)

GD4U, 5U

With infeed straightening table and universal head.

Min. headroom requirement

2400mm (95").



TECHNICAL INFORMATION

Maximum finished size		220 x 120mm (8 7/8" x 4 3/4")
Minimum finished size		15 x 6mm (5/8" x 1/4")
Feed speed		6-22 M/min (18-72 fpm)
Feed Motor Power	Standard	2 kW (3 HP)
	Optional	3 kW (4HP)
Spindle Diameters		40mm
Maximum cut to fence and first bottom head		10mm (3/8")
Spindle speed		6000 r.p.m.
Infeed table	Standard	2m
	Optional	2.5m
Maximum moulding cutting circle (except first bottom)		195mm (7 3/4")
Minimum cutting circle to all heads (except first bottom)		100mm (4")
Minimum planing cutting circle to all heads		125mm (5")
Maximum moulding at side heads with filling in rings removed		180mm (7")
Maximum moulding at side heads 15mm below bed		195mm (7 3/4")
Maximum cutting circle to first bottom head (no edge ref. system)		180mm (7")
Motor powers (standard)	GD4, GD5	GD4U, GD5U
First bottom head	5.5 kW (7.5 HP)	5.5 kW (7.5 HP)
Fence side head	5.5 kW (7.5 HP)	5.5 kW (7.5 HP)
Near side head	5.5 kW (7.5 HP)	5.5 kW (7.5 HP)
Top head	7.5 kW (10 HP)	7.5 kW (10 HP)
Second bottom head - GD5 & GD5U only	5.5 kW (7.5 HP)	5.5 kW (7.5 HP)
Universal head	-	5.5 kW (7.5 HP)

Increased motor power available on request.

As our policy is constantly to improve design, the details given in this leaflet are not to be regarded as binding. Certain models illustrated are of CE specification. Please ask your local Wadkin office or representative for details of specifications to suit your area.

Certain illustrations show guarding removed for clarity.



Publication No. Jet/Eng/GD/9/99

Web Site: www.wadkin.com



Wadkin Ltd.

Green Lane Road

Leicester LE5 4PF, England

Tel: +44 (0)116 2769111

Fax: +44 (0)116 2742310